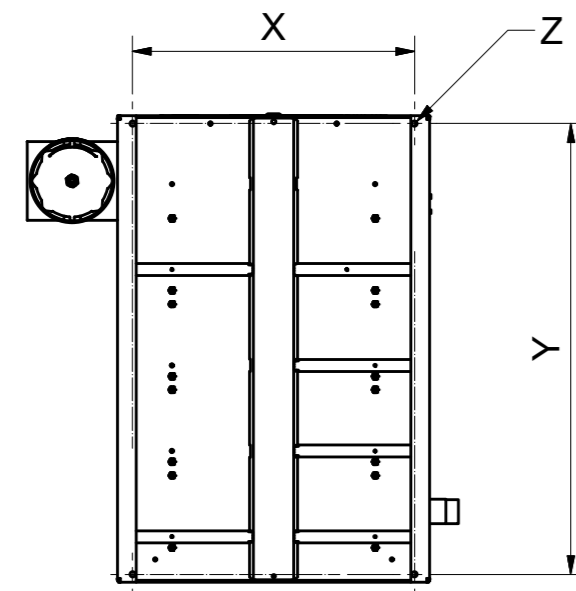
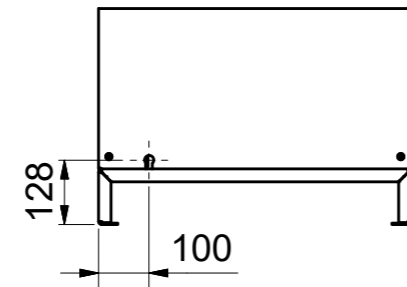


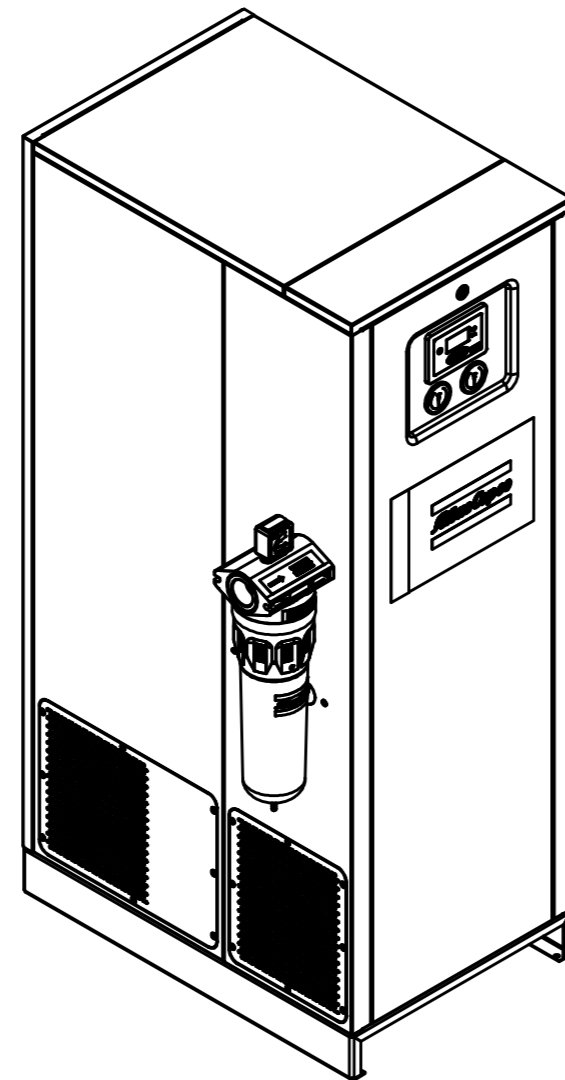
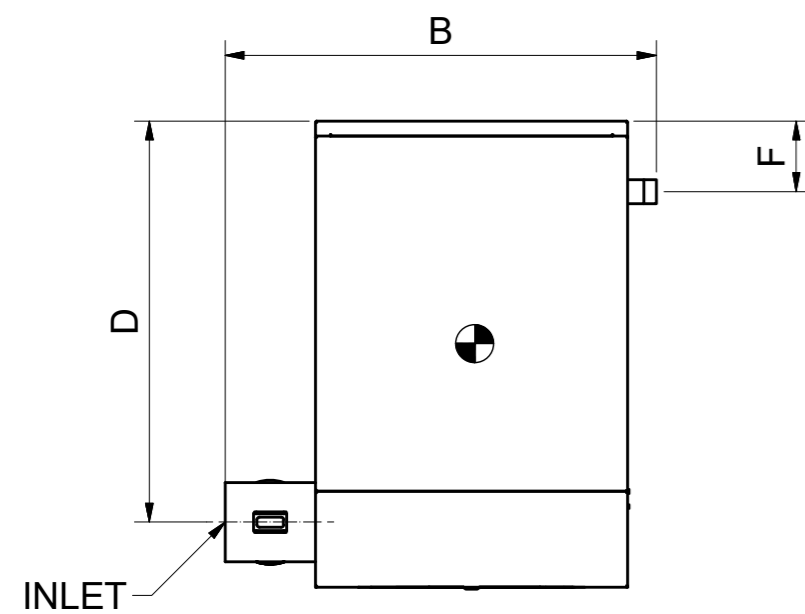
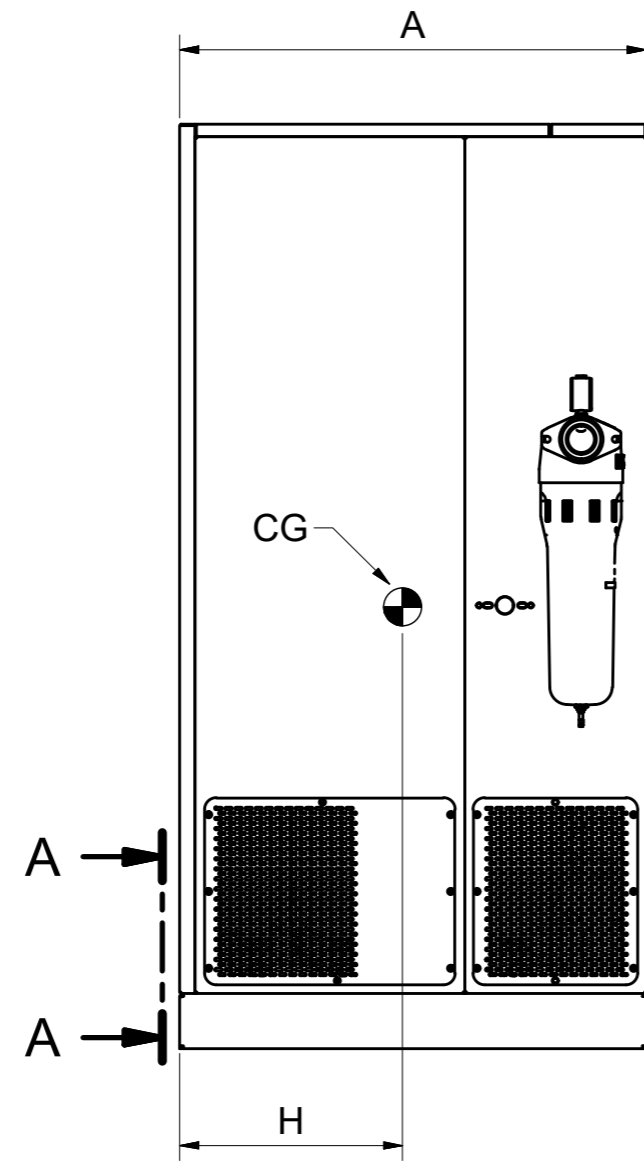
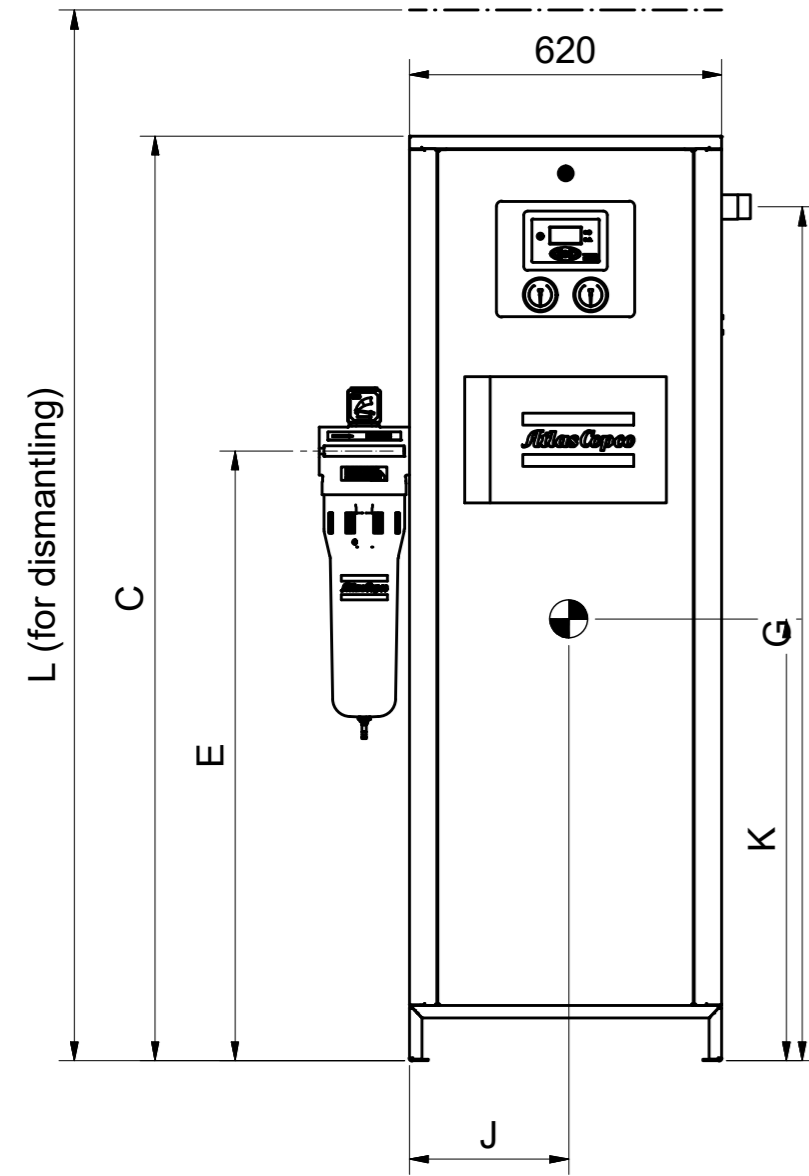
All materials supplied are in compliance with the requirements of the List of Prohibited Substances



POWER SUPPLY
A- A (1 : 15)



2



Model	PDP	Mass	In-Out	A	B	C	D	E	F	G	H	J	K	L	X	Y	ØZ
CD 25 +	-20 °C	95 kg	G1/2" - G1/2"	394	863.5	1205	110	880	115	895	176	313	576	1355	560	360	9
CD 35 +	-20 °C	100 kg	G1" - G1"	394	903.5	1205	110	880	115	895	176	313	576	1355	560	360	9
CD 50 +	-20 °C	110 kg	G1" - G1"	394	903.5	1205	110	880	115	1065	164	311	612	1572	560	360	9
CD 65 +	-20 °C	128 kg	G1" - G1"	394	903.5	1495	110	880	115	1245	161	312	732	1807	560	360	9
CD 80 +	-20 °C	141 kg	G1" - G1"	394	933.5	1495	110	880	115	1395	159	313	767	2252	560	360	9
CD 105+	-20 °C	165 kg	G1" - G1"	394	933.5	1835	110	880	140	1695	159	311	918	2702	560	360	9
CD 125+	-20 °C	218 kg	G1 1/2" - G1 1/2"	564	963.5	1495	431	880	115	1245	245	312	719	1922	560	530	9
CD 150+	-20 °C	234 kg	G1 1/2" - G1 1/2"	564	963.5	1495	431	880	115	1395	241	315	768	2252	560	530	9
CD 195+	-20 °C	277 kg	G1 1/2" - G1 1/2"	564	963.5	1835	431	880	140	1695	255	317	913	2702	560	530	9
CD 225+	-20 °C	331 kg	G2" - G2"	734	1041.5	1495	601	880	115	1395	324	318	755	2252	560	700	9
CD 300+	-20 °C	394 kg	G2" - G2"	734	1041.5	1835	601	1210	140	1695	339	318	891	2702	560	700	9
CD 20 +	-40 °C	95 kg	G1/2" - G1/2"	394	863.5	1205	110	880	115	895	176	313	576	1355	560	360	9
CD 30 +	-40 °C	100 kg	G1/2" - G1/2"	394	863.5	1205	110	880	115	895	176	313	576	1355	560	360	9
CD 40 +	-40 °C	110 kg	G1" - G1"	394	903.5	1205	110	880	115	1065	164	311	612	1572	560	360	9
CD 55 +	-40 °C	128 kg	G1" - G1"	394	903.5	1495	110	880	115	1245	161	312	732	1807	560	360	9
CD 65 +	-40 °C	140 kg	G1" - G1"	394	903.5	1495	110	880	115	1395	159	313	767	2252	560	360	9
CD 85 +	-40 °C	165 kg	G1" - G1"	394	933.5	1835	110	880	140	1695	159	311	918	2702	560	360	9
CD 105+	-40 °C	215 kg	G1" - G1"	564	933.5	1495	280	880	115	1245	245	312	719	1922	560	530	9
CD 125+	-40 °C	234 kg	G1 1/2" - G1 1/2"	564	963.5	1495	431	880	115	1395	241	315	768	2252	560	530	9
CD 170+	-40 °C	276 kg	G1 1/2" - G1 1/2"	564	963.5	1835	431	880	140	1695	255	317	913	2702	560	530	9
CD 190+	-40 °C	331 kg	G1 1/2" - G1 1/2"	734	963.5	1495	601	880	115	1395	324	318	755	2252	560	700	9
CD 250+	-40 °C	389 kg	G2" - G2"	734	1041.5	1835	601	880	140	1695	339	318	891	2702	560	700	9
CD 335+	-40 °C	500 kg	G2" - G2"	929	1041.5	1835	796	1210	140	1695	424	317	909	2702	560	895	9

NOTE:
- All dimensions in millimeters, unless otherwise stated

Tolerances, if not indicated, according to:					
ATLAS COPCO STANDARD CLASS					
Name	DIMENS. DRWG		CD 20-335+		Confidentiality Class acc. to 1102 K
Material	See Drawing		Public		
Treatment	Not Applicable		INV		
	Scale	1 : 15	Family	A2 Compare	
	Drawn by	INEakk	Blank nr.	Replaces	
STATUS	Version Drwg	Blank wt	Kg	Fini wt.	331.788 kg
Parent 3D model	Ed . Version 3D	Des checked.	Prod checked.	Approved.	Date 02-Mar-20
WorkInProgress					Designation
					Sheet 1 / 1
					9829529800-01

CONFIDENTIAL: This document is our property and shall not without our permission be altered, copied, used for manufacturing or communicated to any other person or company.

2.2	Updated Model Names for -20 variants			
Ed	Position	Modified from	Date	Intr./Appd.

9829529800-M1	2.0
Parent 3D model	Ed . Version 3D